



Meeting Date: April 13, 2017

Day Editor and Production Dave Dennis

Our Exchange Student Reports On Her Year

President Ray introduced **Kristy Lanham**, Co-Captain of Team 2, who got things going. **Dave Dennis** did the pledge, **Rick Fauss** did the invocation, and **PDG Lou Gerard** introduced guests.

Recognitions: PP Kathy Anderson took her grandkids to Disneyland. Had a great time and contributed \$100 to the club. Thanks, **Kathy**.

PP Art Smithson took his wife to Las Vegas for her birthday. **Art** got some pool time and made a few observations about current styles. He also signed up to drive some very fast race cars. He tried out a Lamborghini, a Ferrari, and a Porsche. It was very cool and he had a great time and contributed \$100 to the club and \$100 to his Paul Harris. Thanks, **Art**.

Mark Rincon bought a new, to him, BMW for his wife. Thanks for the \$200 to the club **Mark**.

Parvin Carter went to Coachella, CA and with other dentists did volunteer work. They saw 952 patients and contributed dental care with a value of \$510,186. Wow, way to go **Parvin**. **President Ray** said it was a free ride. No recognition, just congratulations and gratitude.



L-R Rick Hill, Rory Greek, President Ray
about Rotary. Contact **Amelia Ward** for more info.

New Member: Rory Greek was inducted today by **President Ray**. **Rory** was sponsored by **Rick Hill** and works at Morgan Stanley as a Financial Advisor. His email is rorygreek@gmail.com and his cell phone is 524-5029. Welcome to Rotary, **Rory**.

Area Assembly: Our Rotary District is hosting an Area Assembly Saturday April 22 from 9:00 to 12:30 at Shasta High School. This is a very informative program and all are encouraged to attend and learn more

Program: Our exchange student from Belgium, **Mathilde D.**, gave a talk about her country and her impressions of her stay in Redding for the last school year. She showed us a family picture of her two sisters and two brothers as well as her mother, father, grandfather, and late grandmother.



She pointed out that her home country of Belgium is over 5,000 miles from Redding and is 13 times smaller than the area of California.



President Ray and Mathilde

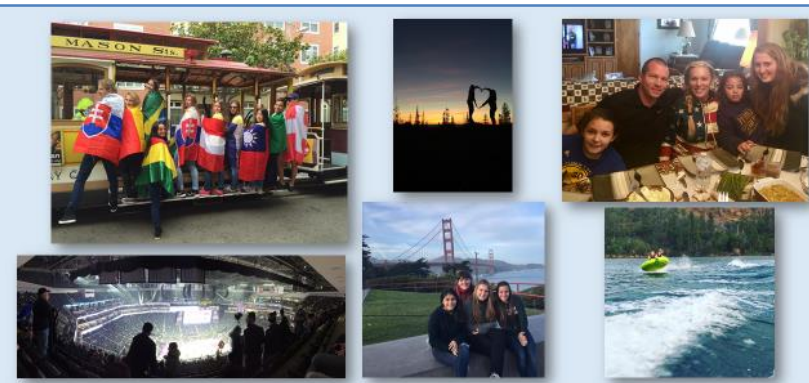
One of the things she noticed was that while her community is composed of what we would consider boutique shops, here in Redding, Wal-Mart is where you go for everything.

Although Belgium is a small country, they have a population of 11.2 million people and three languages, Flemish, French, and German. They have the world's best chocolates, over 1100 brands of beer and other delicious food. Brussels is the capital of Belgium and the headquarters of the European Union.



While staying in Redding, **Mathilde** has visited San Francisco twice, gone water skiing and snow skiing, and gone to Las Vegas. She also has enjoyed Lassen Park, seeing the Redwoods, and shooting a shotgun. She especially enjoyed the I-House visitors, as she has a great interest in other cultures.

Mathilde thanked her host families and the Rotary Club for making this experience possible and so enjoyable. She will be here for a few more months. If you are going on an outing, consider including her in your activities. Contact **Kim** at the Rotary office or **President Ray** to learn about her schedule.



Nice program, **Mathilde**. We now know more about you and your country.

Calendar

April 22	Area Assembly at Shasta High School 9:00 to 12:30
April 27	Scholarships and Teacher of the Year
May 4	Scholar Athlete
May 11	Ben Byler—Built It



Rotary Open World Program – Host Families Needed

Our Rotary club has been awarded a grant from the Open World program to host a group of delegates from Russia this May, and we are looking for volunteers to host a delegate or two during the week of May 20 – May 28, 2017.

The Open World program brings current and future leaders from post-Soviet countries to the United States. Delegates complete an intensive, short-term program that relates to their professional or civic work. Observing their professional counterparts in the U.S., they get a firsthand look at the American system of democracy and free enterprise.

This year the Rotary Club of Redding is hosting a delegation from Russia with professions in public lands, more specifically National Parks. We are in a unique situation to share our Nation's information on public lands with so many examples in close proximity! Our delegates will be visiting Lassen Volcanic National Park, Whiskeytown National Recreation Area, and Shasta State Historic Park to name a few.

The delegates will be housed here in Redding from May 20 – May 28 and will be giving a presentation on their trip to the Redding East Rotary Club on Wednesday May 24. We are looking for host families to give our visitors a place to sleep and a family to give them an example of Redding hospitality. If you are interested in serving in this capacity please contact Kathy Anderson at kathyananderson@aol.com.



Jim Robinson, CSA



2885 Churn Creek Suite B
Redding, California
P 530-223-5939
F 530-223-4773

jrobinson@seniorhelpers.com
HCO License 454700001



KRISTIDAVISOD

DOCTOR OF OPTOMETRY

KRISTI DAVIS, OD

OFFICE: 530.222.7271 FAX: 530.351.7046
2515 Park Marina Dr. Suite 201, Redding, CA 96001
www.DavisOD.com



*DRY-CLEANING*LAUNDRY*ALTERATIONS*DRAPERIES*
*WEDDING-DRESSES*LEATHER & SUEDES*
Dry Cleaning Only with Non-Toxic Solvents

1909 Pine St.
Redding, CA 96001
530-241-6612

Mon. - Fri. 7:30 a.m. to 6:00 p.m.
Sat. 9:00 a.m. to 3:00 p.m.
Teresa Adams - Owner



Mark D. Ball, M.D., F.A.C.S.
AESTHETIC & RECONSTRUCTIVE SURGERY
CERTIFIED - AMERICAN BOARD OF PLASTIC SURGERY

2439 SONOMA ST.
REDDING, CA 96001



(530) 241-1300
FAX (530) 241-0200

AUTHENTIC FAMILY PRACTICE

RICHARD MALOTKY, M.D.

— since 1982 —

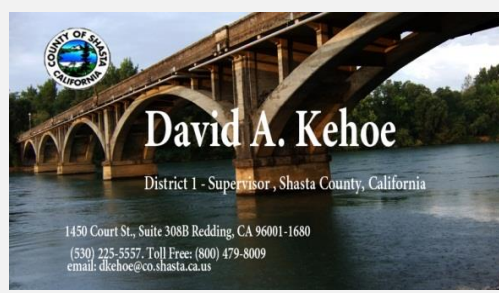
Primary care by:
R. Malotky
1800 Buena Ventura Blvd. Redding CA 96001
ph (530) 244-7707 fax (530) 244-7196
www.SummitMedicalAndDentalArts.com



McKINLEY MORTGAGE CO.

A Tradition of Trust

Tobias J. Preston, President
CA/RE Broker #1773837



Help make a student's first day of school memorable!
NVCSS is partnering with Kohl's for its annual Back to School Shopping Spree.
Saturday, August 5
Volunteer or donate today.
Contact Meghan at 530-247-3372 or visit nvcss.org.

Haedrich & Co., Inc.
commercial real estate
358 Hartnell Ave., Ste. A
Redding, CA 96002
Jessica Whitlow, CCIM
DRE Lic. 01941996
Mobile | 530.205.5593
Office | 530.221.1127
Fax | 530.221.8460
Email | jessica@haedrich.com
Website | www.haedrich.com
CCIM REALTOR



Janice C. Cunningham, CCIM, CRE, CPM®
Principal
2515 Park Marina Drive, Suite 200
Redding, CA 96001
(530) 245-4600
Direct (530) 242-8005
FAX (530) 245-5984
e-mail: jcunningham@coxrec.com
BRE ID #01316081
COX Real Estate Consultants INC.
CRE
CCIM

Foothill Distributing
Budweiser
The Great American Lager
Gary Burks
243-3932
[Email click here](#)

Pat & Bernice Corey
McHale Sign Co.
223-2030
McHALE SIGN CO. INC.



P.O. Box 210/3396 Main Street
Cottonwood, CA 96022
(530) 347-5500
(530) 347-7822 fax
tom@semarcinc.com



Ed Rullman

Entertainment – Lunch – Dinner
221-2335 Web Site click here



CFB INC.

Dar Barzin

524-1408

Frustrated with the rising costs of health benefits for your employees? We can help!



*Unlimited,
Accessible,
Highly Personalized
Health Care*

Direct Primary Care

Dr. Jill Friesen 262-6626 wellcaremd.com

Adecco

**Nikki Anthony
Branch Manager**

1080 East Cypress Avenue
Suite D
Redding, CA 96002
Direct: 530.226.5050
Mobile: 530.520.1673
nicole.anthony@adeccona.com

linkedin.com/in/anthonynikki

adeccousa.com

SagePoint Financial, Inc

Sherrill Bambauer

243-5646

email click here



jpricecpa@charter.net
JUDY L. PRICE, CPA, INC.
Phone: 530-347-1726



EMPIRE RECOVERY CENTER
FOR THE RESIDENTIAL TREATMENT OF SUBSTANCE ABUSE

MARJEANNE STONE B.A., M-RAS, C.A.D.C. II,
Executive Director

1237 California Street
Redding, California 96001-0618
(530) 243-7470 • (530) 945-5968
FAX (530) 243-7477
www.empirerecoverycenter.org



Member Agency
of the United Way



INTERWEST
INSURANCE SERVICES, LLC

**Kendell Seamans
Steven L. Williams
Brian Seamans**

310 Hemsted Drive, Suite 200
Redding, CA 96002
Phone (530) 222-1737
Toll Free (800) 485-6533
www.iwins.com

CA DOI License #0801094

RVS

RYAN VALUATION SERVICES
Independent Valuations Since 1976

Charles W. Ryan, MAI

1647 Court Street | Redding, CA 96001
PO Box 994226 | Redding, CA 96099-4226
T 530.224.6744 | C 530.941.1642 | F 530.224.2790 | cwryan@rvsmx.com | rvsmx.com

Mark Rincon
Fit Physical Therapy
222-2083



Rotarians making a difference
every day in your community.

Donate blood today.



BloodSource®
— SHASTA

YES, YOU DO SAVE LIVES
bloodsource.org | 866.822.5663

All of us serving you®

Northern California
Community Banking
PD-CA-REDD
1700 Pine St
Redding, CA 96001

530.242.6382 direct
530.300.3527 cellular
530.244.1896 fax

usbank.com



Liesl Schmidt
Region President
liesl.schmidt@usbank.com

**PLUMAS
BANK**
HERE. For Good.

Nolan C. Hawkins
Senior Vice President,
Regional Commercial Loan Manager

1335 Hilltop Drive
Redding, CA 96003
530.246.2364 Ext. 2410
Cell: 530.515.1870
nolan.hawkins@plumasbank.com

LPL Financial

Waybright Financial Group
Jason Waybright
LPL Registered Principal
CA Insurance #0C11704

1314 Trinity St.
Redding, CA 96001
jason.waybright@lpl.com
www.lpl.com/jw

530.243.1386 Office
530.243.1469 Fax

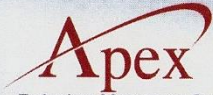
Jason Waybright is a registered representative with, and securities offered through, LPL Financial, member FINRA/SIPC.

Brent Weaver

Office: 530.243.8121
Cell: 530.355.4694
Fax: 530.243.7516
web: www.weaver-lumber.com
email: brent@weaver-lumber.com



KENNETH H. WOOD, BC-HIS
UPSTATEHEARING.COM



Technology Management, Inc.

Scott Putnam
President/CEO

www.apex.com
scott@apex.com
P: (530) 248-1006 | F: (530) 243-9184
310 Hemsted Drive Suite 300 | Redding, CA 96002

Transforming Organizations and Lives Through Innovative Technology Solutions

Scott Valley Bank
Founded 1888

Welcome to
scottvalleybank.com

Our "Main Street" online environment
delivers region-specific news & information.

**CLICK YOUR REGION
TO ENTER***

* Businesses outside of California and Oregon should select the Bay Area Region. This choice will be remembered if cookies are enabled on your device.

- . Canvas Wall - Art Photos
- . Copy Old VHS Tapes, Films
- . Old Photos Restored
- . Cameras: Nikon, Canon
- . Free Photo Classes, Walks



Gary Engell
243-8333



Bobby Ranger, Senior VP

Harry Grashoff Gary Burks
224-3333



Cindy Fisher
Vice President/Commercial Loan Officer
Cornerstone Community Bank
NMLS# 498689

530.222.1460 Main • 530.262.6125 Direct
530.222.4501 Fax
cfisher@bankcornerstone.com

150 E. Cypress Ave., Suite 100 • Redding, CA 96002
www.bankcornerstone.com

Jason Knox Parker, CIMA®
Senior Investment Management Consultant
First Vice President
Financial Advisor

Wealth Management
310 Hemsted Drive, Ste. 100
Redding, CA 96002

tel 530 223 4200
direct 530 222 7321
fax 530 223 2535
toll free 800 733 6126

CA Insurance Lic. # 0F67982

Morgan Stanley

NMLS # 1278580
www.morganstanley.fa.com/jason.k.parker
jason.k.parker@morganstanley.com

State Farm®
Providing Insurance and Financial Services
Home Office, Bloomington, Illinois 61710



Jeff Avery, ChFC, CASL, CPCU, CLU
Agent, Lic. #0D09479
e-mail: jeff@jeffavery.net

1822 Buenaventura Blvd., Suite 107, Redding, CA 96001
Phn. 530 243 4600 Fax 530 243 3551
Home 530 243 7155

