



Music by the one and only Rick Hill

Jake's Virtual Recognitions

ROTARY BENEFACTOR

Joe and Diane have become Rotary Benefactors. What is a **Rotary Benefactor**?

A **Benefactor** is an individual who notifies The **Rotary** Foundation of a commitment for future gifts to the Endowment included in their estate plans or who makes an outright gift of \$1,000 or more to the Endowment. **Benefactors** receive a certificate and insignia to be worn with a **Rotary** or Paul Harris Fellow pin.

Good job Joe and Diane, and thanks for the extra \$100 to your Paul Harris Fellow.

Past Pres. Greg Balkovek being in charge of the meeting needed some information for recognitions. Greg has a friend named David Kehoe. We all know Dave. He was a member of our club for years. It seems Dave is re-roofing a house at Bodega Bay. Greg thought it would be a good idea to recognize Dave for the endeavor.

The only problem is Dave belongs to the evening club and is no longer a Redding Rotary Club Rotarians. \$50 from Greg.



Girls, Inc.: \$2,390
 One SAFE Place: \$5,634
 Empire Recovery Center: \$3,000
 Lassen Park Foundation: \$2,500
 Roughout Ranch Foundation: \$500
 Cub Scout Pack 44: \$945



Total Awarded: \$14,969

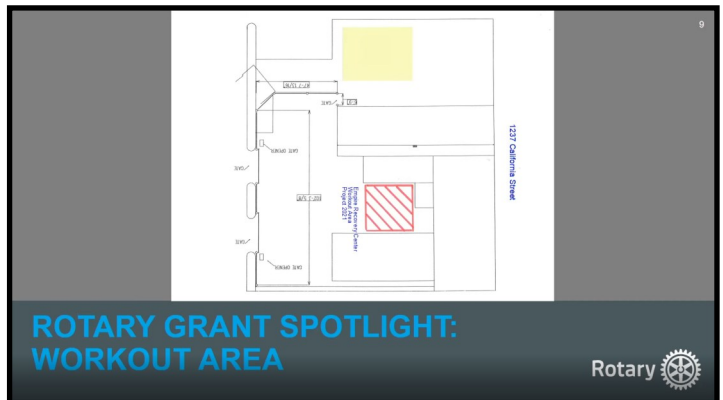
ROTARY GRANTS AWARDS



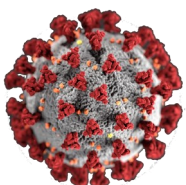
Where the Money Goes

Empire Recovery is one of the benefactors of Redding Rotary's grants. Marjeanne described some of the areas where the Empire Recovery grant will be used. What is badly needed is an outside exercise area behind the hotel.

Shown below is what the project will look like along with a detailed drawing of the entire project. Great work Marjeanne for the Empire.



Last week the Lassen Park Foundation was featured. Looks like President Jake will be featuring a grant recipient each week detailing where the funds are used. Four more recipients to go.



Shasta County Health and Human Services has started vaccinating for Covid-19. The start of the process is to download the registration form from the Shasta Ready website. You can download the form [HERE](#). The next vaccination date is January 19th. Be sure to check the ShastaReady.org website for where and times the vaccine will be administered. January 19th is for seniors 75 and older.

Malaria Partners International



Malaria Partners International
Formerly Rotarian Malaria Partners



15

JENNY ANDREWS, MALARIA PARTNERS INTERNATIONAL AKA: "ED'S FIRST HEARTBREAK"



Jenny Andrews from Malaria Partners International was the program of the day. Jenny mentioned the success Rotary International has had removing Polio from the face of the earth. With the job so close to being accomplished, Jenny mentioned there is another project worthy of Rotary's efforts. Malaria has killed a number of people equal to one half of the people that ever lived. Malaria was eradicated from the United States in the 1950's.

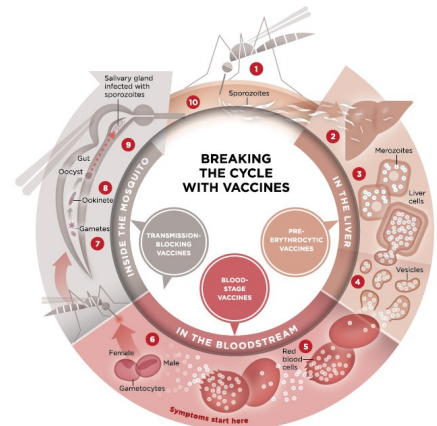
Malaria Partners International is based in Seattle, Washington. There are nine board members found in Rotary clubs throughout the country. Some 70 Rotary clubs are participating in projects connected to MPI.



The Anopheles mosquito transmits the disease. Once an infected mosquito bites a human being, the Sporozoite organism settles in the liver. It then becomes a Merozoite maturing to disperse thousands of Vesicles. These infect the red blood cells of the infected person. The red cells die or rupture releasing male and female Gametocytes. These are picked up by the mosquito to start the cycle all over again.

The defeat of Malaria has several phases all important.

- Elimination of the Anopheles mosquito.
- Finding those infected with malaria or diagnosis.
- Administering medication to those infected persons.
- Vaccinate a population to protect against the disease.
- The use of medication to prevent the disease in visitors to areas know to have malaria.



Who are the Community Health Workers?

Demographics Characteristics

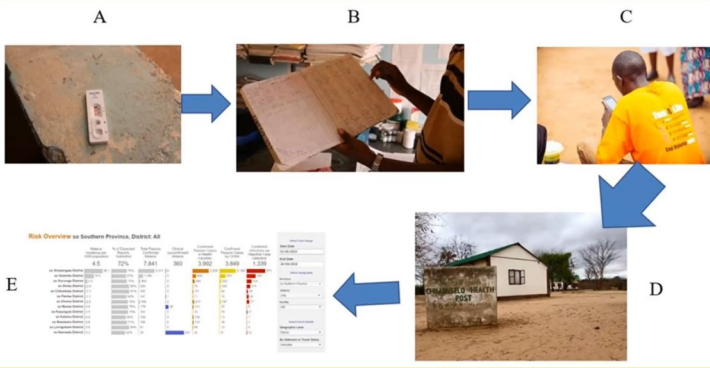
- Gender: 67% Male, 33% Female
- Education: approximately 9 yrs
- Marital status: 83% married

PATH | Seattle 6 February 2020 Travis R. Porter | Tulane University SPHTM
Component D Community Health Worker Survey: Preliminary Results



Malaria Partners International has a program to train “Community Health Worker.” This is being done in Africa. The program consists of six days of training in class with one day in the field. Once the training is complete the CHWs are sent into the public.

Once an infected person is found that person goes into a data base so the progress of the disease can be followed.



The data base allows for the tracking of the disease, its treatment and prevention.

The CHWs have a graduation where they are given bicycles to travel to the different villages. The cost breakdown is one CHW per 500 people with the dollar value at \$2.00 per person per year. The program is very economical.

Rotary International invested \$2.1 billion for Polio. It is natural that the eradication of malaria could be the next RI endeavor. The project leaders are already in place. Each Rotary club could select the project manager and either work directly in Africa as so many Rotarians do or correspond with another project manager on the scene.

Malaria Partners International has been well represented in Uganda and Zambia for 11 years. There are 1556 CHWs serving some 800,000 people That equates to 1 CHW to 500 people.

If interested contact Jenny directly at 425-890-0204. You can also visit their website [HERE](#).

January 2021	
January 21st	Hill Country Clinic
January 28th	TBA
February 4th	TBA
February 11th	TBA

Missy McArthur

Community Advocate



Property Mgt.
P.A. (Retired)
Medical Admin. (Retired)

robsmom@shasta.com



Greg Dunbar, P.E.
Managing Principal
Civil Engineer
Lic. 56522

Land Development
Consultants
CIVIL ENGINEERING
SURVEYING
LANDSCAPE ARCHITECTURE
PLANNING
PRESENTATION GRAPHICS

VOICE 530.221.1792
FAX 530.221.8369
gdunbar@sdsengineering.com

6590 Lockheed Drive
Redding, CA 96002
www.sdsengineering.com

Senator K. Maurice Johannessen^(ret)
Secretary, California Dept. of Veterans Affairs^(ret)
Commissioner California Parks & Recreation^(ret)
CALIFORNIA VETERANS ASSISTANCE GROUP INC.
KMJ Development, LLC



737 Auditorium Drive
Redding, CA 96001

(530) 241-7500
Fax (530) 241-5953

mbjohannessen@gmail.com

Adecco

Nikki Anthony
Branch Manager

1080 East Cypress Avenue
Suite D
Redding, CA 96002
Direct: 530.226.5050
Mobile: 530.520.1673
nicole.anthony@adeccona.com

linkedin.com/in/anthonynikki

adeccousa.com



KENNETH H. WOOD, BC-HIS

UPSTATEHEARING.COM



Jake Mangas
President &
Chief Executive Officer

530.225.4433 ext. 104
Cell 530.515.5264
1321 Butte St., Ste. 100
Redding, California 96001

@ReddingChamberofCommerce
@ReddingChamber

jake@reddingchamber.com
www.reddingchamber.com

Go forth in awe

Rotarians making
a difference
every day in
your community.
Donate blood
today.



Help make a student's first day of school memorable!

NVCSS is partnering with Kohl's for our annual
Back to School Shopping Spree – drive-thru style!

Saturday, August 1

Volunteer or donate today.

Contact Meghan at 530-515-7900 or visit nvcss.org.



1951 Churn Creek Road . Redding, CA 96002

Bobby Ranger

Senior Vice President
Regional Manager
bobbyr@mboc.com

Tel: 530.722.3949
Cell: 530.510.3748
Fax: 530.224.2220

Gary Burks Harry Grashoff

MAXWELL

INSURANCE & FINANCIAL
judy.mif@adviserfocus.com
www.maxwellif.com

Judy L. Maxwell, ChFC
Financial Advisor
1378 Hilltop Drive
Redding, CA 96003

Phone: 530.221.0441
Phone: 800.339.0441
Fax: 530.221.0725
CA Lic# 0B16280

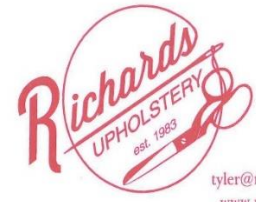
Bryant Construction



Leslie Williem

Phone: 241-6262
email: rsbinc05@earthlink.net
5255 Eastside Road
Redding, CA 96001

Tyler Lanham
Owner



472 Wilshire Dr
Redding Ca 96002

(530) 222-6082
tyler@richards-upholstery.com
www.richards-upholstery.com

Bruce Dean Co-Founder

Black Bear
Diner



JULIE GUSSENHOVEN, OD

DOCTOR OF OPTOMETRY

P: (530) 222-7290 F: (530) 605-1152
3416 BECHELLI LN, REDDING, CA 96002
DRGUSSENHOVEN.COM

Morgan Stanley



Richard L. Hill
Senior Vice President | Financial Advisor
310 Hemsted Drive, Suite 100
Redding, CA 96099
530-222-7304
rick.hill@morganstanley.com
advisor.morganstanley.com/
the-path-finder-group-0000646886
CA Insurance Lic.# 0B37056 / NMLS# 31'544

© 2020 Morgan Stanley Smith Barney LLC. Member SIPC. 3C009.CIC382722.08/20



Janice C. Cunningham, CCIM, CRE, CPM®
Principal

2515 Park Marina Drive, Suite 200
Redding, CA 96001

(530) 245-4600
Direct (530) 242-8005
FAX (530) 245-5984
e-mail: jcunningham@coxrec.com
BRE ID #01316081



Blach Beverage LLC



Gary Burks
General Manager
243-3932

[Email click here](#)



"The Coarsegold Kid"



DOCTOR OF OPTOMETRY

KRISTI DAVIS, OD

OFFICE: 530.222.7271 FAX: 530.351.7046
2515 Park Marina Dr. Suite 201, Redding, CA 96001
www.DavisOD.com



TODD DAVIS
Partner / President

OBSIDIAN

530-405-9492

obsidianit.com
Enterprise IT Services

Pat & Bernice Corey
McHale Sign Co.
223-2030



THOMAS R. SEMINGSON
ARCHITECT

T 530-347-5500
F 530-347-7822

tom@semarcinc.com

3233 BRUSH ST.
MAIL: P.O. BOX 210
COTTONWOOD, CA 96022



Ed Rullman

Entertainment – Lunch – Dinner
221-2335 Web Site click here



Certified Public Accountants | Advisors

John Williams, JD, MBA, LLM, CPA
Founder & President
Judy Price
Certified Public Accountant

Redding Office: 1314 Trinity Street
Redding, CA 96001

Corporate Headquarters: 2213 Main Street
Susanville, CA 96130

Phone: 530.257.7721 • Fax: 530.257.3127
www.waccpas.com • john@waccpas.com • judy@waccpas.com



WellcareMD
Direct Primary Care

MARY BRACE, OFFICE MANAGER
530 262-6626 WELLCAREMD.COM

Jill Letendre

Vice President
District Manager, Shasta Humboldt District

530.646.3863 direct
530.244.1896 fax
jill.letendre@usbank.com



Redding Main - Community Bkg
1700 Pine St
PD-CA-REDD
Redding, CA 96001

usbank.com

SagePoint Financial, Inc

Sherrill Bambauer

243-5646

[email click here](#)



Cindy Fisher
Senior Vice President
Commercial Loan Officer
NMLS# 498689

530 262-6125 Direct • 530 222-1460 Branch
530 222-4501 Fax
cfisher@bankcornerstone.com
192 Hartnell Ave • Redding, CA 96002
bankcornerstone.com



Complete engineering services
with attention to individual
client needs since 1976

FRED LUCERO, P.E., P.L.S.
PRINCIPAL ENGINEER
LAND DEVELOPMENT

1730 SOUTH STREET (530) 244-0202
REDDING, CA 96001 Cell (530) 941-8986
email: flucero@paceengineering.us

State Farm®
Providing Insurance and Financial Services
Home Office, Bloomington, Illinois 61710



Jeff Avery, ChFC, CASL, CPCU, CLU

Agent, Lic. #0D09479
e-mail: jeff@jeffavery.net
1822 Buenaventura Blvd., Suite 107, Redding, CA 96001
Phn. 530 243 4600 Fax 530 243 3551
Home 530 243 7155



RYAN VALUATION SERVICES
Independent Valuations Since 1976

Charles W. Ryan, MAI

1647 Court Street | Redding, CA 96001
PO Box 994226 | Redding, CA 96099-4226
T 530.224.6744 | C 530.941.1642 | F 530.224.2790 | cwryan@rvsmx.com | rvsmx.com

Mark Rincon
Fit Physical Therapy
222-2083



INTERWEST
INSURANCE SERVICES, LLC

CA DOI License #0B01094

Kendell Seamans
Steven L. Williams
Brian Seamans

310 Hemsted Drive, Suite 200
Redding, CA 96002
Phone (530) 222-1737
Toll Free (800) 485-6533
www.iwins.com

Disclaimer: Redding Rotary encourages our members to support our advertisers. The Rotary Club of Redding does not endorse any one company, business, organization or individual placing an ad in our newsletter.
