



Riverfront Playhouse

Getting Things Started

Led by the Past Presidents, **Amelia Ward** served as M.C. and introduced the members of the past presidents team serving today: Greeters were **John Dunlap** and **Greg Balkovek**, **Tom Stovall** led the Pledge, **Mark Rincon** led the invocation, **Greg Dunbar** introduced our visitors and guests.

Pre-meeting entertainment was provided by **Jennifer Finnegan** with her rendition of "I'm Dreaming of An In-person Christmas", complete with photos from happier times when we actually were able to party in person.



Music With Jen presented
"I'm Dreaming of An In-person Christmas"

Announcements

Joanna Dean & Nikki Anthony brought us an update on our annual Adopt-A-Family outreach. Here are the stats:

- 8 Families with 17 total kids were treated to a merrier Christmas.
- 25 service-hours were spent shopping, wrapping and delivering presents.
- A total of \$2,500 was spent on presents (thanks to a couple of unidentified Rotarians who kicked in an additional \$800 to the budget.)

Special thanks was given to Kristy Lanham for mentoring the committee. Other committee members recognized were **Julie Gussenhoven**, **Cindy Fisher**, and **Janice Cunningham**.



Musical Safari Anyone?

Amelia Ward made us aware of a unique opportunity to support some worthwhile organizations in South Africa while enjoying a virtual musical safari - please see the details below:



THE ROTARY CLUBS OF POLOKWANE D9400 SOUTH AFRICA AND MONTEREY PACIFIC D5230 USA

Invite you to a Wonderful Wildlife **Virtual Charity Concert**

Date and time: Saturday, 19th December at your leisure

Tickets: Your Donation

Visit: <https://www.eventbrite.com/e/131923579979>

Join us, from the comfort of your sofa, on a musical safari through the Limpopo Province of South Africa, encountering breath-taking images of wildlife, set to the joyful beats and soaring songs of local African choirs and musicians - all in celebration of our shared natural heritage and interconnected lives.

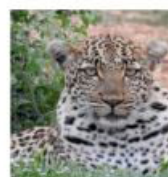
Recipients: Siloe School for the Blind, Tshilidzini Special School, KG Maluleke Memorial Organisation (KGOMANO) & Rhino Counter-Poaching.

Your donation is tax deductible under US IRS non-profit 501(c)3 statute.
Rotary Club of Monterey Pacific Tax ID # 84-213104

In Partnership with Energy FM & Choice FM Polokwane.



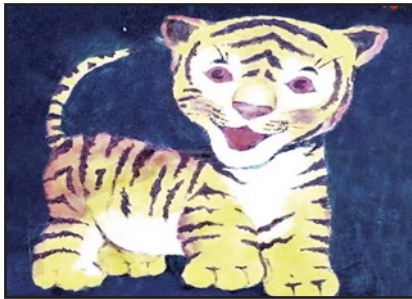
For more information contact:
Rotarian Ann Appel at
rotarysafariconcert@gmail.com



Getting to Know Your Past Presidents

Amelia Ward introduced one of our most interesting fellow Rotarians, **Tiger Michiels**, in this meeting's installment of "Getting to Know Your Past Presidents".

Living a very storied life, **Tiger** regaled us with many interesting anecdotes of life growing up in Southern California and New Mexico. He walked us through the family liquor store business in Hollywood, the many celebrities he grew up around, as well as his experiences living in the Nichols Canyon area of the Hollywood Hills.



Part of his growing-up-years were spent in New Mexico living the life of an honest to goodness cowboy, performing cattle drives and living life on the range. Yee-haw!

Among his many accomplishments, **Tiger** is a prolific photographer, painter and author, and part of his presentation was sharing various examples of these creative pursuits. Thanks for the presentation, **Tiger**!



A view of one of the family's early businesses, The Coach & Horse with the Clydesdales



An adorable young Tiger (on the right)



One of **Tiger's** paintings depicting Nichols Canyon, the family home, and the many celebrity residents



Tiger (far left) with the neighborhood "gang"

Calendar

December 24	Dark, no meeting
December 31	Dark, no meeting
January 7	TBA, Team 3 leading
January 14	TBA, Team 4 leading

Today's Program - Riverfront Playhouse

John Mathena introduced today's presenter, **Darryll Alvey**, President of Redding's Riverfront Playhouse. **Darryll** brought us up to speed with happenings at the Playhouse amid all the COVID restrictions.

The Rotary Club of Redding played an important role in the Playhouse's new location by providing the manpower and materials to build its impressive new stage. Here's a summary of the history of the Playhouse's new location leading up to 2020:



Riverfront Playhouse
President **Darryll Alvey**



- Building was acquired in June 2016.
- Architectural plans were drafted, engineering ground testing done, construction contract negotiated, and financing secured.
- Construction commenced in early 2019.
- Started the move from East Cypress to California Street in February 2019.
- Pandemic becomes public health issue.
- Completely out of East Cypress April 1, 2019 and into 1950 California Street pending issuance of City of Redding permit of occupancy.
- Received permit of occupancy September, 2020, but unable to open our doors due to COVID-19.

With the restrictions brought on by COVID, the Playhouse has adapted to 2020 by producing a virtually-presented seasonal performance titled "Tis the Season". This production is available for in-home viewing now through the end of December. After purchasing the performance, you can download the video to your computer and watch as many times as you like. Tickets can be purchased at their website: RiverFrontPlayhouse.net

Here are some photos and details of the performance:



- The 15- person cast began rehearsals in early October.
- Adult performers: Katie Narf, Rashod Holmes, Jo Heneveld, Kris Dickey, Rebecca Gilbert, Emily Yarnell, Spenser Deardorff, Nick Meyer, Micah Duclos.
- Children performers: Cadge Percia, Julia Swope, Marin MacIntosh, Mariah Santala, Malakai Langenberg.

Go forth in awe

Rotarians making
a difference
every day in
your community.
Donate blood
today.



Help make a student's first day of school memorable!

NVCSS is partnering with Kohl's for our annual
Back to School Shopping Spree – drive-thru style!

Saturday, August 1

Volunteer or donate today.

Contact Meghan at 530-515-7900 or visit nvcss.org.



MERCHANTS bank of commerce

1951 Churn Creek Road . Redding, CA 96002

Bobby Ranger

Senior Vice President
Regional Manager
bobbyr@mboc.com

Tel: 530.722.3949
Cell: 530.510.3748
Fax: 530.224.2220

Gary Burks

Harry Grashoff



Judy L. Maxwell, ChFC
Financial Advisor
1378 Hilltop Drive
Redding, CA 96003

Phone: 530.221.0441
Phone: 800.339.0441
Fax: 530.221.0725
CA Lic# 0B16280

Bryant Construction



Leslie Williem

Phone: 241-6262
email: rsbinc05@earthlink.net
5255 Eastside Road
Redding, CA 96001

Tyler Lanham
Owner



472 Wilshire Dr
Redding Ca 96002

(530) 222-6082
tyler@richards-upholstery.com
www.richards-upholstery.com



JULIE GUSSENHOVEN, OD
DOCTOR OF OPTOMETRY

P: (530) 222-7290 F: (530) 605-1152
3416 BECHELLI LN, REDDING, CA 96002
DRGUSSENHOVEN.COM

Morgan Stanley



Richard L. Hill
Senior Vice President | Financial Advisor
310 Hemsted Drive, Suite 100
Redding, CA 96099
530-222-7304
rick.hill@morganstanley.com
advisor.morganstanley.com
the-pathfinder-group-0000646886
CA Insurance Lic# 0B37056 / NMLS# 31'544

© 2020 Morgan Stanley Smith Barney LLC. Member SIPC. 3C007 C1C3B2722 0823



Janice C. Cunningham, CCIM, CRE, CPM®
Principal

2515 Park Marina Drive, Suite 200
Redding, CA 96001

(530) 245-4600
Direct (530) 242-8005
FAX (530) 245-5984
e-mail: jcunningham@coxrec.com
BRE ID #01316081



Blach Beverage LLC



Gary Burks
General Manager
243-3932

[Email click here](#)



"The Coarsegold Kid"

KRISTIDAVISOD
DOCTOR OF OPTOMETRY

KRISTI DAVIS, OD

OFFICE: 530.222.7271 FAX: 530.351.7046
2515 Park Marina Dr. Suite 201, Redding, CA 96001
www.DavisOD.com



TODD DAVIS
Partner / President

OBSIDIAN

530-405-9492

obsidianit.com
Enterprise IT Services

Pat & Bernice Corey
McHale Sign Co.
223-2030



THOMAS R. SEMINGSON
ARCHITECT

T 530-347-5500
F 530-347-7822

tom@semarcinc.com

3233 BRUSH ST.
MAIL: P.O. BOX 210
COTTONWOOD, CA 96022



Ed Rullman

Entertainment – Lunch – Dinner
221-2335 Web Site click here

W&C WILLIAMS & COMPANY, PC
Certified Public Accountants | Advisors

John Williams, JD, MBA, LL.M., CPA
Founder & President
Judy Price
Certified Public Accountant

Redding Office:
1314 Trinity Street
Redding, CA 96001

Corporate Headquarters:
2213 Main Street
Susanville, CA 96130

Phone: 530.257.7721 • Fax: 530.257.3127
www.waccpas.com • john@waccpas.com • judy@waccpas.com



WellcareMD

Direct Primary Care

MARY BRACE, OFFICE MANAGER
530 262-6626 WELLCAREMD.COM

Jill Letendre

Vice President
District Manager, Shasta Humboldt District

530.646.3863 direct
530.244.1896 fax
jill.letendre@usbank.com

Redding Main - Community Bkg
1700 Pine St
PD-CA-REDD
Redding, CA 96001



usbank.com

SagePoint Financial, Inc

Sherrill Bambauer

243-5646

email click here



Cindy Fisher
Senior Vice President
Commercial Loan Officer
NMLS# 498689

530 262-6125 Direct • 530 222-1460 Branch
530 222-4501 Fax
cfisher@bankcornerstone.com
192 Hartnell Ave • Redding, CA 96002
bankcornerstone.com



Complete engineering services
with attention to individual
client needs since 1976

FRED LUCERO, P.E., P.L.S.
PRINCIPAL ENGINEER
LAND DEVELOPMENT

1730 SOUTH STREET (530) 244-0202
REDDING, CA 96001 Cell (530) 941-8986
email: flucero@paceengineering.us

State Farm®
Providing Insurance and Financial Services
Home Office, Bloomington, Illinois 61710



Jeff Avery, ChFC, CASL, CPCU, CLU
Agent, Lic. #0009479
e-mail: jeff@jeffavery.net

1822 Buenaventura Blvd., Suite 107, Redding, CA 96001
Phn. 530 243 4600 Fax 530 243 3551
Home 530 243 7155



RYAN VALUATION SERVICES
Independent Valuations Since 1976

Charles W. Ryan, MAI

1647 Court Street | Redding, CA 96001
PO Box 994226 | Redding, CA 96099-4226
T 530.224.6744 | C 530.941.1642 | F 530.224.2790 | cwyryan@rvsmx.com | rvsmx.com

Mark Rincon
Fit Physical Therapy
222-2083



INTERWEST
INSURANCE SERVICES, LLC

Kendell Seamans
Steven L. Williams
Brian Seamans

310 Hemsted Drive, Suite 200
Redding, CA 96002
Phone (530) 222-1737
Toll Free (800) 485-6533
www.iwins.com

CA DOI License #0801094

Missy McArthur

Community Advocate

robsmom@shasta.com

Property Mgt.
P.A. (Retired)
Medical Admin. (Retired)



Greg Dunbar, P.E.

Managing Principal
Civil Engineer
Lic. 56522

Land Development
Consultants
CIVIL ENGINEERING
SURVEYING
LANDSCAPE ARCHITECTURE
PLANNING
PRESENTATION GRAPHICS

VOICE 530.221.1792

FAX 530.221.8369

gdunbar@sdsengineering.com

6590 Lockheed Drive

Redding, CA 96002

www.sdsengineering.com

Senator K. Maurice Johannessen (ret)
Secretary, California Dept. of Veterans Affairs (ret)
Commissioner California Parks & Recreation (ret)
CALIFORNIA VETERANS ASSISTANCE GROUP INC.
KMJ Development, LLC



737 Auditorium Drive
Redding, CA 96001

(530) 241-7500
Fax (530) 241-5953

mbjohannessen@gmail.com

Adecco

Nikki Anthony
Branch Manager

1080 East Cypress Avenue
Suite D
Redding, CA 96002
Direct: 530.226.5050
Mobile: 530.520.1673
nicole.anthony@adeccousa.com

linkedin.com/in/anthonynikki

adeccousa.com



KENNETH H. WOOD, BC-HIS

UPSTATEHEARING.COM



Jake Mangas
President &
Chief Executive Officer

530.225.4433 ext. 104
Cell 530.515.5264
1321 Butte St., Ste. 100
Redding, California 96001
jake@reddingchamber.com
www.reddingchamber.com

@ReddingChamberOfCommerce
@ReddingChamber

Disclaimer: Redding Rotary encourages our members to support our advertisers. The Rotary Club of Redding does not endorse any one company, business, organization or individual placing an ad in our newsletter.
